
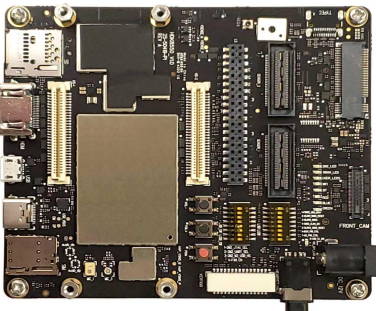


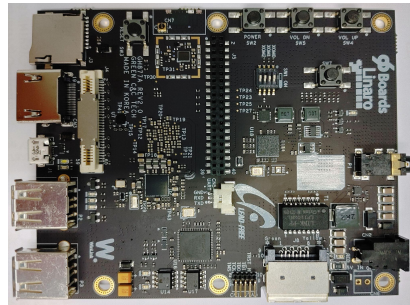
## GBL in Action on Devboards

**Generic Bootloader Library (GBL)** is an **Android** Bootflow UEFI app, developed and provided by Google  - it allows SoC vendors to utilise a standardised library to fulfill the Android Bootflow requirements.

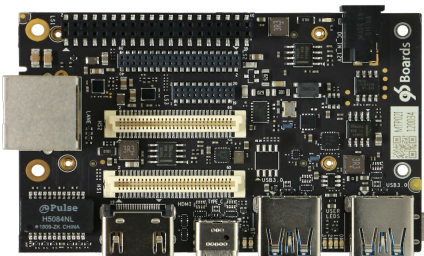
This demo showcases **GBL** being used to provide Android bootflow requirements on top of **U-Boot** bootloader on Linaro supported Devboards.



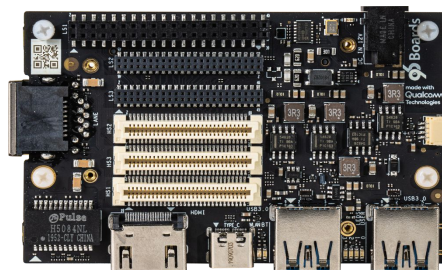
SDM8550-HDK



E850-96



DB845c (RB3)



QRB5165 (RB5)